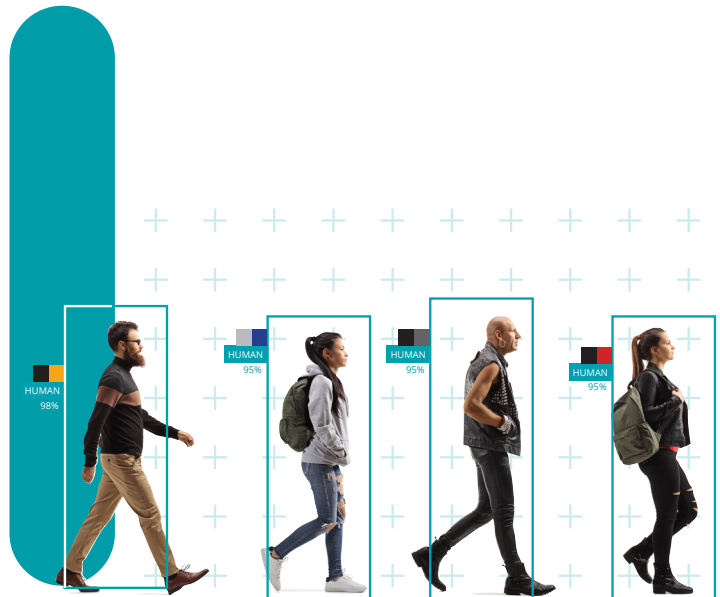
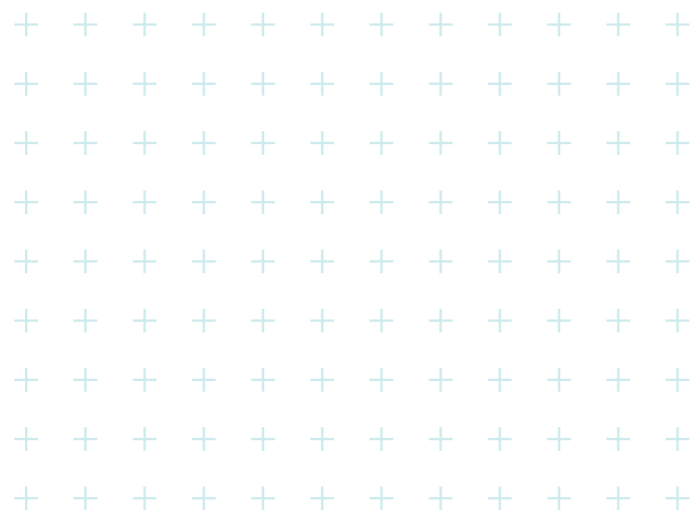
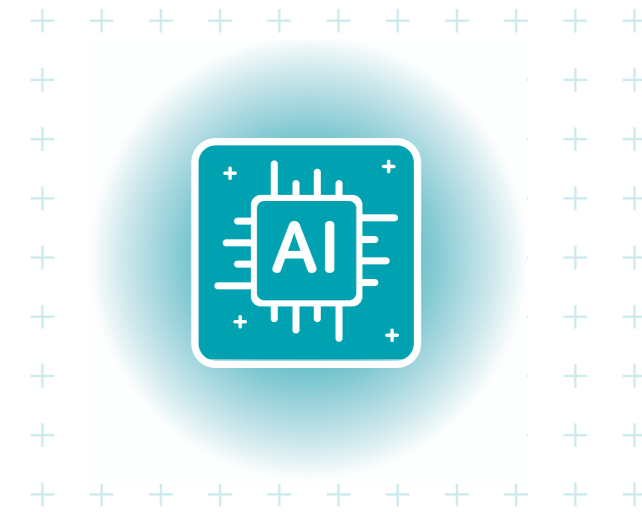


The Value and Benefits of End-To-End AI Video





Contents

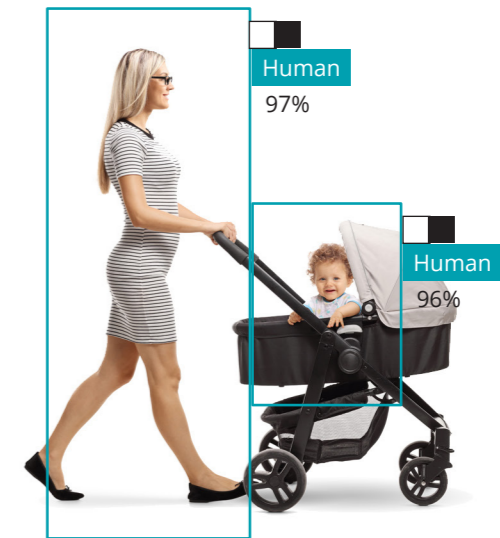
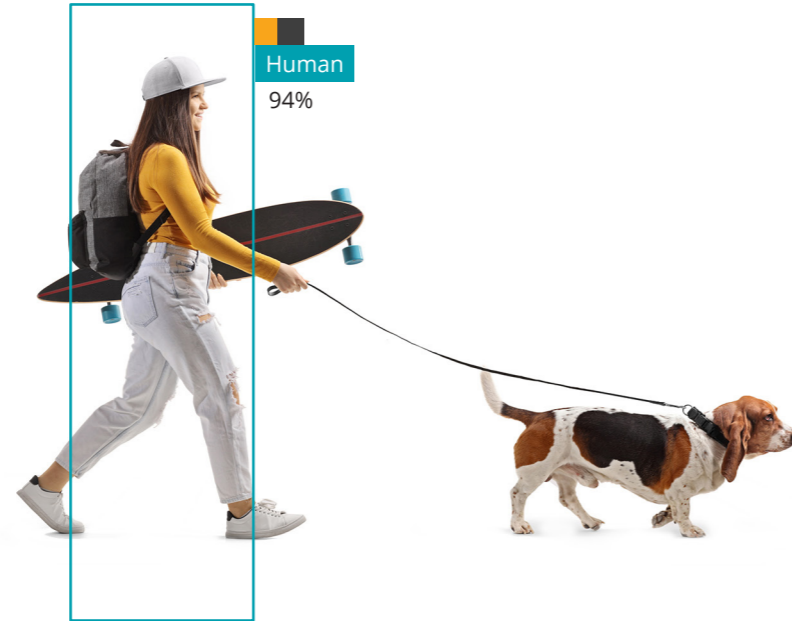
- Page 5 1. The Value and Benefits of End-To-End AI Video
- Page 6 2. Key Features and Benefits of AI Video
- Page 8 3. Unlocking The Power of Business Data
- Page 12 4. Five Steps for Risk-Free Adoption of AI Video
- Page 16 5. Why End-To-End AI Video Solutions Are the Winning Option
- Page 18 6. New Strategies for Harnessing AI Video, For Profitability and Competitiveness



The Value and Benefits of End-To-End AI Video



Vehicle
96%



Introduction

AI video solutions are transforming many business sectors, driving profitability and operational efficiency. With increasingly reliable tools for detection and verification, this technology is poised to go much further.

By leveraging AI video innovations effectively, organizations can differentiate themselves from competitors, drive growth, and build sustainable competitive advantages.

But with opportunity comes risk: the risk of investing in the wrong technology; over-spending on infrastructure that fails to live up to expectations; being tied-into unsustainable contracts; or of being trapped with an inflexible, dead-end solution that will be discontinued before the end of equipment lifecycles.

This high-level eBook is written to help users understand the capabilities of AI video, and the benefits of end-to-end solutions – to help you avoid pitfalls, invest with confidence, and to start reaping the advantages of AI video immediately.

2 Key Features and Benefits of AI Video

The most widely-used video analytics tools—now being put to work in sectors from retail to logistics, hospitality to manufacturing - include:



- People Counting
- Occupancy Monitoring
- Object Detection
- Line-Cross Detection
- Heatmaps
(showing activity patterns in specific locations)
- Face Detection
- Detection based on trigger events

All these functions, when handled by AI video analytics, can replace manual monitoring, collection, and analysis of data. AI does this job more accurately, and at lower cost, allowing human resources to be better deployed.

For example, in warehouses and industrial settings, where safety adherence is critical, some of the most useful recent advances in video analytics - including the ability to detect people falling over, abandoned objects or items left blocking fire exits - are helping to mitigate major risks in these settings.

In addition, the metadata captured by AI analytics allows users to speed up forensic search and export of evidential footage, cutting the time taken from days and hours to minutes, increasing the efficiency of investigations.

And today the uses for AI video go much wider than security

Video analytics were first developed primarily as a risk management tool, and they have grown to be ever more powerful in enabling accurate, early detection of threats or events of interest.

But it's no longer just security and risk managers who see the value of AI video—it's the customer service directors who want to reduce queuing and waiting times; the operations directors who want to speed up deliveries or optimize staff deployment; or the marketing directors who want a better understanding of customer movements around merchandising and special promotions.



3

Unlocking The Power of Business Data



At-a-glance dashboards make it easy to unlock new and added value from various metrics; for example, measuring sales performance or production output against peaks and troughs of people flow. In branch retail businesses, metrics from people counting, transmitted via VMS, integrated with retail point of sale (POS) or wider ERP solutions, will allow easier analysis of sales turnover and visitor numbers by day, month, and week.

Armed with this better understanding, businesses can focus management attention on areas of their operations that have the most potential for improvement, for example staffing levels, internal training, premise locations, stock handling, customer service and more.

Optimizing logistics and warehousing

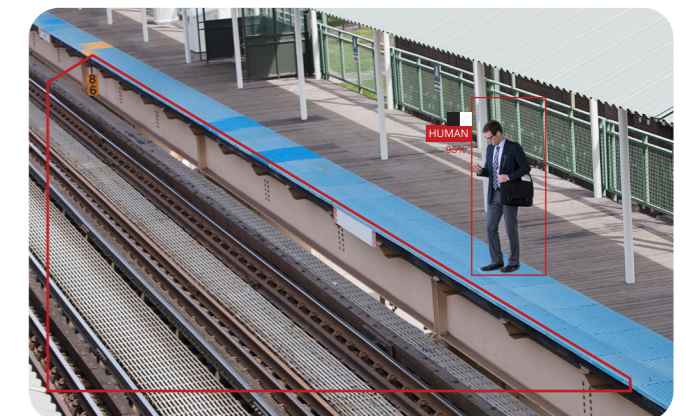


In logistics settings and manufacturing plants, companies face continuing pressures on supply chains, and there is much greater awareness of the need to design-in operational resilience. Digitization, including video analytics, is one of the key enablers. We are seeing value being gained from existing surveillance infrastructure through affordable analytics upgrades and add-ons,

as well as investment in entirely new systems. Cameras that are already in place for security and safety surveillance, are being enhanced with AI so they can now better perform tasks and deliver additional, high value benefits.

Driving a new focus on health & safety

We are seeing increased focus on health and safety across many sectors and intelligent video analytics tools such as line-cross detection linked to automated PA reminders can provide an extra layer of protection in a wide range of settings. They are being used to enhance surveillance in locations where people are known to stray and where they are at greater risk, despite warning signs and other measures – leaning over safety barriers for example, standing close to rail platform edges, or crossing into restricted zones where heavy machinery operates.



The same automated detection capability can support more effective and rapid intervention if people disregard warnings—and there are several reasons why they might, from complacency, and lack of due attention, a physical disability or mental vulnerability.

Protecting sterile environments

We are also now seeing many applications for AI-video in sterile environments, such as:

- Food Processing
- Drug Manufacturing
- Healthcare Settings
- Laboratories and Research Facilities



In these settings, tools such as mask-wearing detection that proved their value widely during the pandemic, are now finding routine use helping to enforce hygiene and various other protocols.



Safer parking and easier parking lot management



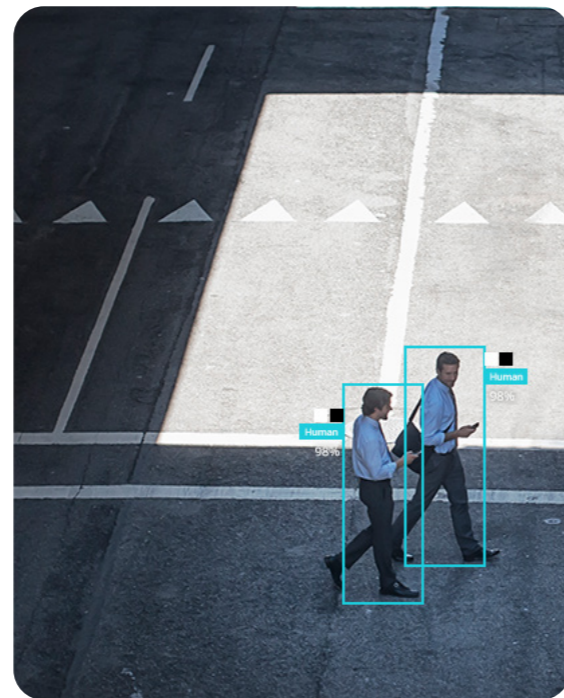
AI is consistently and quickly proving to be a powerful new tool for parking lot management, with authorized lists for staff parking, and line-cross safety demarcation around non-parking zones and driver blind-spots, both improving safety. Analytics are enhancing protection against theft of and from vehicles; and they are enabling greater vigilance when pedestrians enter parking areas, for example allowing anti-social behavior to be spotted more reliably.



4 Five Steps for Risk-Free Adoption of AI Video

Get the image quality right

No AI video solution can be accurate or effective without clear, crisp image capture in HD or ultra-HD. So, achieving reliably sharp picture quality should be the starting point for anyone looking to adopt or upgrade to AI video. That means having a wide line-up of cameras to choose from and specifying the right model for the application: it must be able cope with all lighting conditions that are likely to occur, including rapidly changing dappled light, bright backlighting, subdued light, or full darkness.

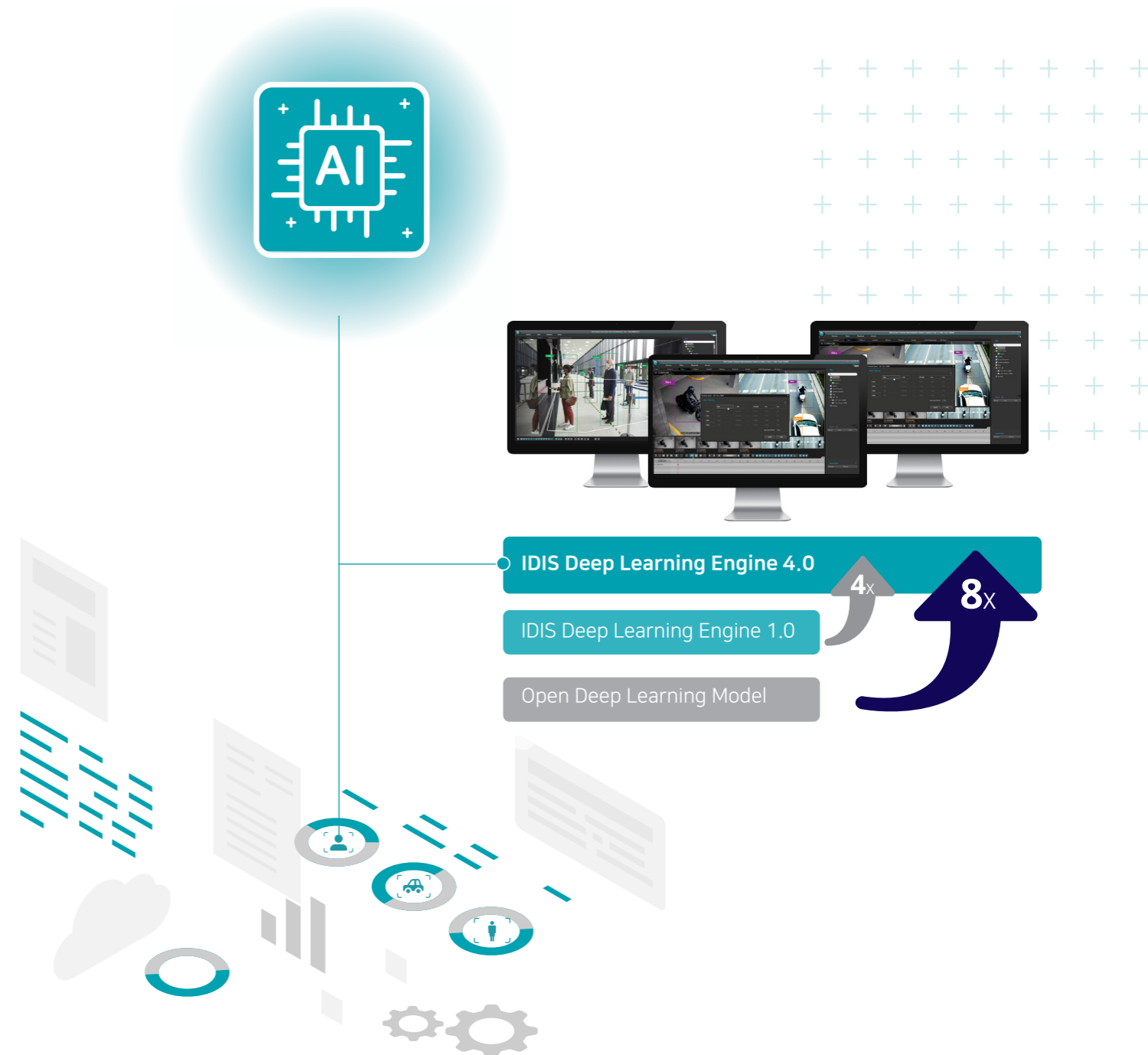


Cover the scene, with no waste and no blind spots

Having a wide choice of cameras also lets you cover the scene more economically, without having more cameras than you need, and without creating blind spots—for example, by using powerful fisheye cameras to give broad scene coverage, and targeting bullet and dome cameras for priority areas.

Choose the best deep learning engine

Not all analytics are equally accurate, reliable, or powerful. So, it is essential that the AI video solution you choose is underpinned by a deep learning algorithm with proven accuracy, to ensure fault-free detection, alerts, and data processing. For example, the IDIS Deep Learning Engine has been independently tested up to an industry-best 98% accuracy level.





...plus, look for a risk-free phased-adoption route

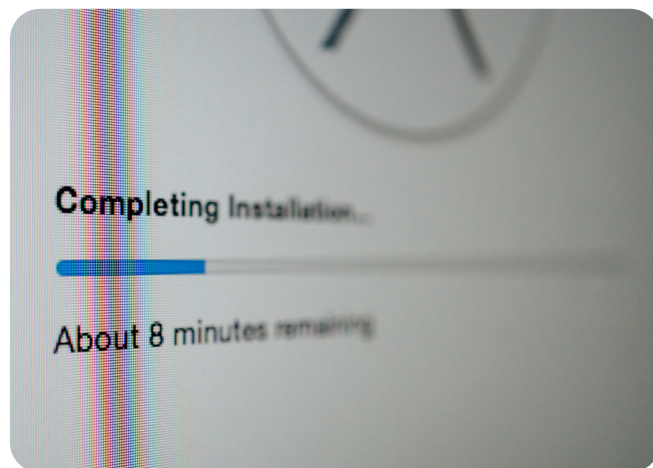
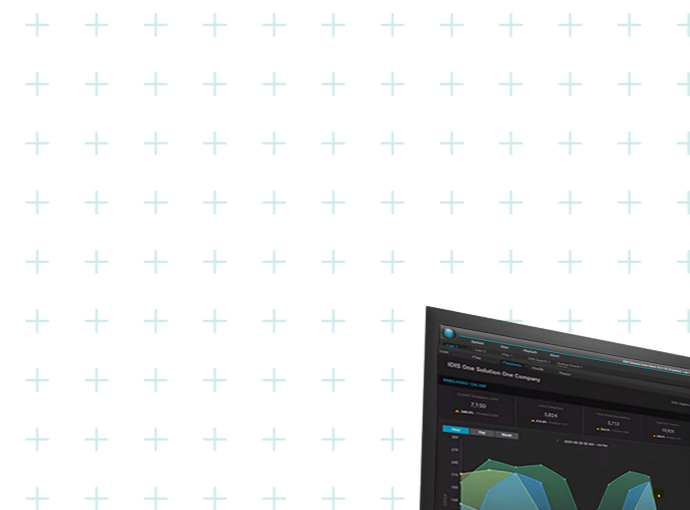
With the right vendor, you will be able to introduce analytics with a phased adoption. This will let you target AI, test the way you use it, and explore benefits without committing to the expense of a complete system upgrade and help with total cost of ownership (TCO).

With IDIS solutions, users can use IDIS edge AI cameras with on-board processing to target a few specific locations; or they can add AI capabilities to groups of up to four cameras at a time, using easy add-on AI box devices. They can also opt for complete system-wide AI capabilities via the IDIS Solution Suite video management software (VMS).

Crucially, this modular approach makes it easy to upgrade any part of a system, adding new AI capabilities affordably and without wasting previous investments.

Look for ongoing R&D commitment

AI video is developing rapidly, so choose technology from a manufacturer with a strong research pedigree, committed to continuous development of AI technology. It's smart to choose a well-established brand with a wide user base that includes advanced deployments.



Keep your upgrade options open

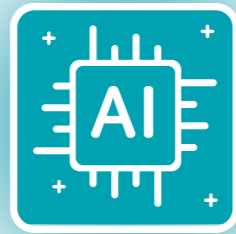
In the years after your system is installed you will likely want to adapt and improve it further. Choose a solution with the assurance of scalability, and forward-and-backward tech compatibility, so that upgrades are an ongoing and affordable option. With this

approach your investment is less likely to become out-of-date or run into a technological dead-end.



5

Why End-To-End AI Video Solutions Are a Winning Option



There are significant advantages to choosing an end-to-end AI video solution, by which all your system devices, hardware, and software are supplied by a single manufacturer.

With the best end-to-end systems, you get greater buyer protection and benefits, so you can invest in AI with confidence:

- A single contact point and line of responsibility for support
- Guaranteed full functionality of all AI features
- Seamless, user-friendly video management software (VMS) designed to let you harness every feature, without specialist knowledge or training
- A feature-rich mobile app, allowing authorized users to manage their AI video system remotely and on the move
- Enhanced cybersecurity, with no password loopholes or data transmission weaknesses
- Faster, more efficient installation, saving time and money
- No last-minute technology glitches or problems with compatibility
- The lowest operating costs, with no ongoing license fees, and easy maintenance with upgrade ability.

With IDIS end-to-end video you have the assurance of compliance with standards including NDAA, and international data privacy rules.

IDIS technology also comes with the confidence of industry-best warranties against equipment failure, all adding up to an unbeatable low total cost of ownership (TCO).





New Strategies for Harnessing AI Video, For Profitability and Competitiveness



With today's flexible, affordable, and powerful AI video solutions, now is the perfect opportunity to upgrade from conventional video systems and to start harnessing the power of deep learning analytics.

With a best-in-class end-to-end solution, you have the reassurance of sustainable technology that can provide extended service and that will remain adaptable long into the future.

As a first step, you are encouraged to research the market and understand how your peers and competitors are using AI; talk to your systems integrator or your trusted advisor, and learn more about how the latest solutions they are delivering could also work for you.

With any fast-developing technology, there's no need to get stuck with old playbooks. Be imaginative, ask what's possible, and look for the new benefits and value that AI video can bring to your project, application, or whole organization.

And lastly, remember that AI video analytics are not intended to replace people, but to empower them to be more effective and efficient – for example, to arm and train local branch managers with actionable intelligence, while giving head office teams the data and trend analysis they need for better strategic decision making.

AI video is a powerful new resource that's ready for you to use.



IDIS AI Solutions

Increase security and efficiency
with highly accurate IDIS Deep Learning Analytics



The Value and Benefits of End-To-End AI Video



IDIS HQ

IDIS Tower, 344 Pangyo-ro
Bundang-gu, Seongnam-si
Gyeonggi-do, 13493
Republic of Korea

📞 +82 (0)31 723 5400
📠 +82 (0)31 723 5100
✉️ sales@idisglobal.com

IDIS America

801 Hammond Street
Suite 200
Coppell, TX 75019
U.S.A.

📞 +1 469 444 6538
📠 +1 469 464 4449
✉️ sales_americas@idisglobal.com

IDIS Europe

1000 Great West Road
Brentford, Middlesex
TW8 9HH
United Kingdom

📞 +44 (0)203 657 5678
📠 +44 (0)203 697 9360
✉️ uksales@idisglobal.com

IDIS Middle East

P.O. Box 341037
D-308, DSO HQ Bldg
Dubai Silicon Oasis
Dubai, U.A.E.

📞 +971 4 501 5434
📠 +971 4 501 5436
✉️ sales_mena@idisglobal.com

Turkiye Liaison Office

📞 +90 533 696 7780
✉️ sales_mena@idisglobal.com

IDIS Netherlands

De Slof 9
5107 RH
Dongen
The Netherlands

EU Distribution Center
📞 +31 (0)162 387 217
✉️ sales_eu@idisglobal.com

IDIS Benelux
📞 +31 (0)162 387 247
📠 +31 (0)162 311 915
✉️ sales@bnl.idisglobal.com

IDIS and identifying product names and numbers herein are registered trademarks of IDIS Co., Ltd. All non-IDIS brands and product names are trademarks or registered trademarks of their respective companies. Product appearance, build status, and/or specifications are subject to change without notice. Copyright © IDIS Co., Ltd. All rights reserved.